

Salon & Style

MONDAY, MAY 6, 2013



HAIR FORCE
Paul Mitchell school puts on fundraising show

STYLE | D6

Dear Abby D2
Crossword D2
Entertainment D3
Comics D4
Television D5
Carolyn Hax D6

Got a clue?

Sleuths, practice with this quiz before you go to 'Mystery in Masterpieces'

By **DAVE MASON**
NEWS-PRESS STAFF WRITER

Think like Sherlock Holmes, and you'll realize "it sticK," as opposed to lipstick, isn't just a pun. It's a clue pointing to an artist's work.

Ala! Now you get the picture. Verbal clues will lead detectives — everyone brought a magnifying glass, right? — to the paintings in "Mystery in Masterpieces." The fundraiser will take place 6 to 9 p.m. June 1 at the Santa Barbara Museum of Art, 1130 State St.

Event chairwoman Gwen Baker said she hopes to raise between \$75,000 and \$80,000 during the contest, which benefits the museum's acquisitions, special exhibits, programs and educational services and includes a silent auction. Tickets cost

\$200 for the 13-year-old event, which is coordinated by the Women's Board of the Santa Barbara Museum of Art and takes place every other year.

About 200 people are expected to pack the galleries to find 15 to 20 paintings after being given a list containing one short and clever clue per painting. They're frequently visual or verbal puns. The clues are compiled by Jamie Fleming of Ojai, who has worked as an executive at the Walt Disney Co. and Universal Studios, and his team. Mr. Fleming is known in local art circles as the Clue Master and has created treasure hunts at the Los Angeles County Museum of Art.

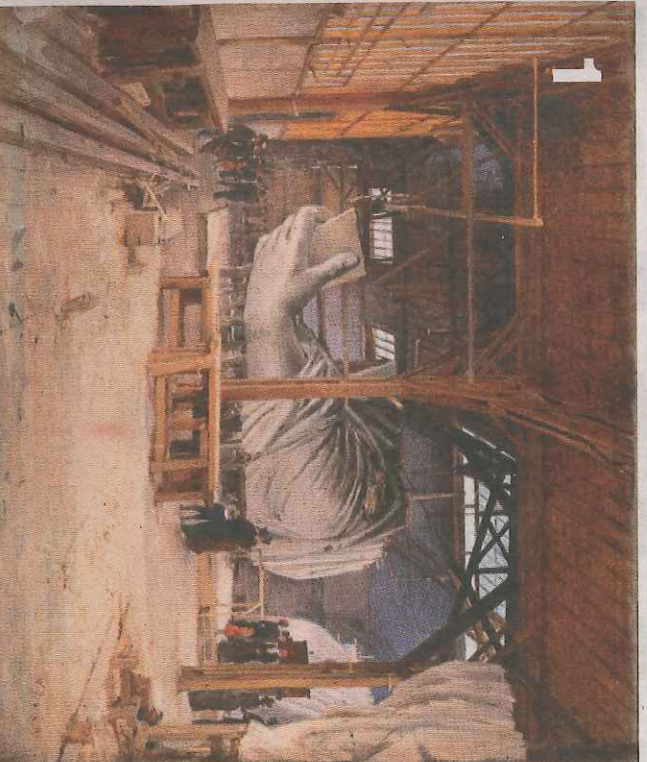
Whoever comes up with the highest number of correct answers in the shortest time wins the first-place prize of a landscape by Santa Barbara artist Ralph Waterhouse. Second place is a watercolor

by Ray Hunter, another local artist. Third place is dinner and spa for two, courtesy of Bacara Resort & Spa in Goleta.

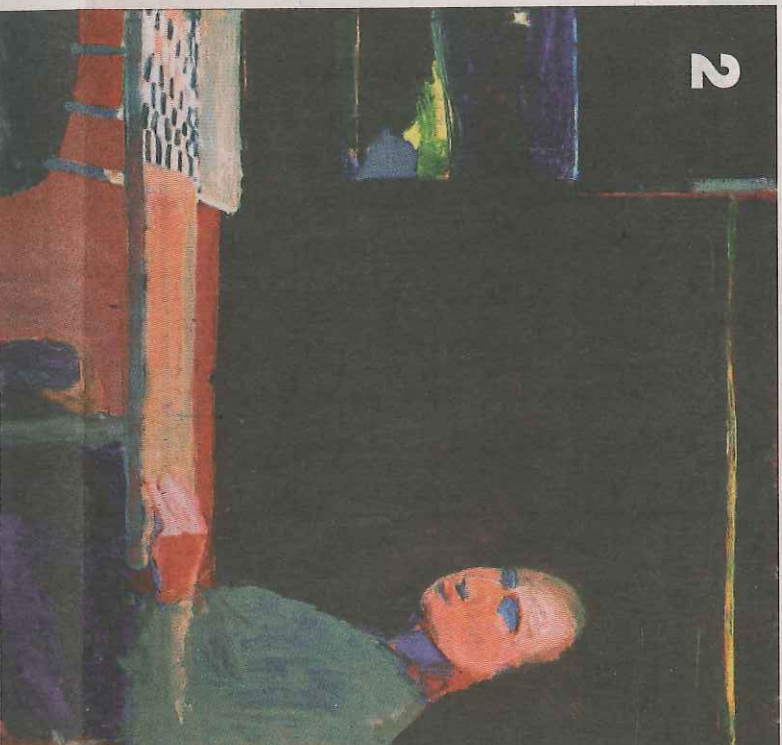
The prize for those who work in teams is admission to an Ensemble Theatre Company play and dinner at Petit Valentin. Both the dinner and play are for four people.

"Mystery in Masterpieces" begins with a reception in the Asian galleries, then another gathering with cocktails and hors d'oeuvres in Ludington Court, followed by the hunt at 7 p.m. in the galleries. It usually takes the winners from a 30 to 45 minutes to find the paintings, and afterward, participants see the correct pictures projected on the screen in the museum's Mary Craig Auditorium, Ms. Baker said.

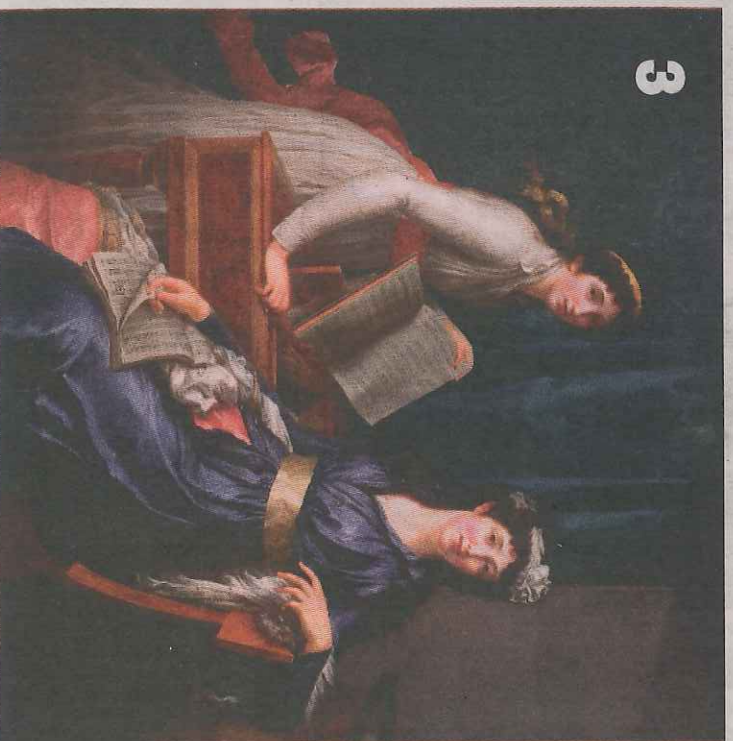
A good sense of humor, a knowledge of puns and careful examination of paintings help contestants, the event chairwoman



1
IMAGES COURTESY SANTA BARBARA MUSEUM OF ART
"The Statue of Liberty in Frederic-Auguste Bartholdi's Studio, Paris" by Paul-Joseph-Victor Dargaud, oil on canvas (1884). Santa Barbara Museum of Art purchase, financed by 19th Century Endowment Funds and Suzette Davidson Art Acquisition Endowment.



2
"Woman and Checkerboard" by Richard Diebenkorn, oil on canvas (1956). Santa Barbara Museum of Art purchase, financed by Pacific Coast Biennial Fund.



3
"Portrait of Madam D'Erceville and Her Daughter" attributed to Marie-Victoire Lemoine, oil on canvas (date not known). Gift to the Santa Barbara Museum of Art from Mrs. Hugh N. Kirkland.



4
"The Pardon" by Jules Breton, oil on canvas (1872). Gift to the Santa Barbara Museum of Art from Kenneth W. Waters in memory of Elizabeth Converse Strong Waters.



Jamie Fleming of Ojai and his team come up with the clues at Mystery in Masterpieces.

email: dmmason@newspress.com

noted. "The playing field is even. It's not about who knows the most about art." She explained it's about who's the most clever in deciphering a clue. She cited one clue from a past event: "A school with no pupils." That turned out to be a reference to artist Max Pechstein's painting "Die Alte Brücke (The Old Bridge)." Look carefully: a school of fish was swimming under the bridge. Their eyes didn't have pupils.

Ala! How well would you do? Below are four paintings and clues from previous "Mystery in Masterpieces" events, plus one painting and clue that Mr. Fleming provided just for the News-Press. Get out your magnifying glass, and see if you can match the clue to the painting.

Identify the paintings that go with these clues. Four of them are from past Mystery in Masterpieces events, and Jamie Fleming, the fundraiser's clue master, provided one just for the News-Press.

- A. Lit stick.
- B. Notebooks.
- C. Lass has spyglass.
- D. Cast member.
- E. WOMAN WHO WOULD BE KINGED.

Answers on
Page D6



5
"Woman in Grey On Board Ship, Gazing at the Sea" by Ernest Ange Duez, oil on canvas (1873). Santa Barbara Museum of Art purchase, financed by the Suzette and Eugene Davidson Fund.